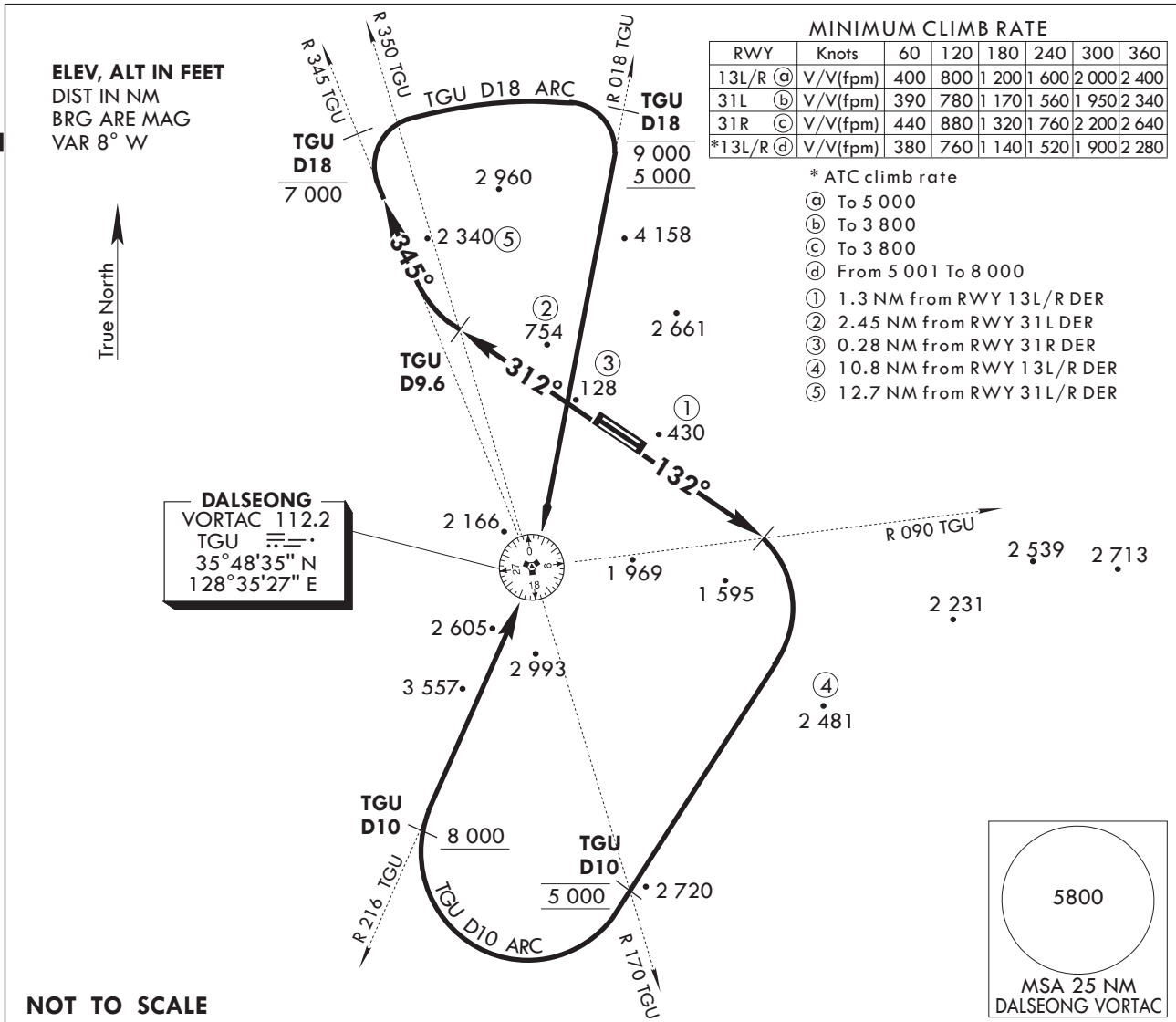


STANDARD DEPARTURE
CHART - INSTRUMENT(SID)

DAEGU DEP	135.9
	230.3
DAEGU TWR	126.2
	236.6

DAEGU/Daegu Intl(RKTN)
RWY 13R/L, RWY 31L/R
DALSEONG 3A

Note : Departure under U.S. TERPS.



DEPARTURE ROUTE DESCRIPTION

RWY 13R/L : Climb on HDG 132° until cross R 090 TGU, then climbing right turn direct R 170 TGU 10 DME maintain 5 000. Then climbing right turn and proceed along 10 DME ARC to intercept R 216 TGU. Then track inbound on R 216 TGU at or above 8 000, and climb to assigned altitude or as directed by DEP control.

RWY 31L/R : Climb on HDG 312° until cross R 350 TGU, then climbing right turn track outbound on R 345 TGU to 18 DME at or below 7 000. Then turn right and proceed along 18 DME ARC to intercept R 018 TGU 18 DME between 5 000 to 9 000. Then climbing right turn inbound on R 018 TGU and climb to assigned altitude or as directed by DEP control.

Change : Information of MAG VAR.

INTENTIONALLY

LEFT

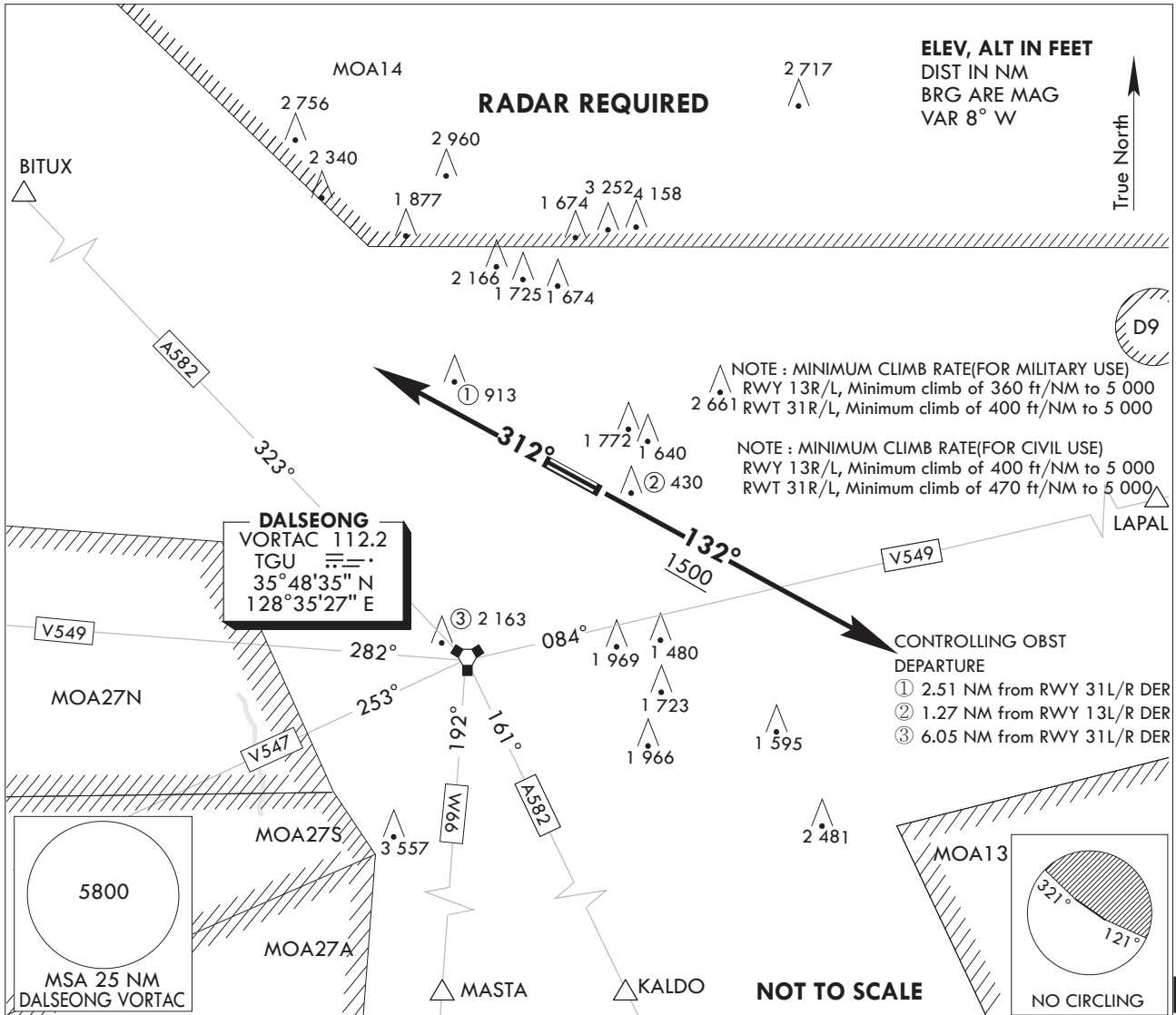
BLANK

STANDARD DEPARTURE
CHART - INSTRUMENT(SID)

DAEGU DEP	135.9
	230.3
DAEGU TWR	126.2
	236.6

DAEGU/Daegu Intl(RKTN)
RWY 13R/L, RWY 31L/R
DAEGU 1D

Note : Departure under U.S. TERPS.



DEPARTURE ROUTE DESCRIPTION

RWY 13L/R : Climb on HDG 132° to 1 500, Thence.....

RWY 31L/R : Climb on HDG 312°, Thence.....

.....Expect radar vectors to intercept filed enroute fix or navaid.
Maintain 8 000 or assigned altitude/flight level.
Expect filed altitude/flight level 10 minutes after departure.

LOST COMMUNICATIONS : If radio contact is not established with departure control prior to reaching 5 000, Continue climb to 8 000 before turning to filed fix/navaid and proceed filed route and altitude.

Change : Information of fix name.

INTENTIONALLY

LEFT

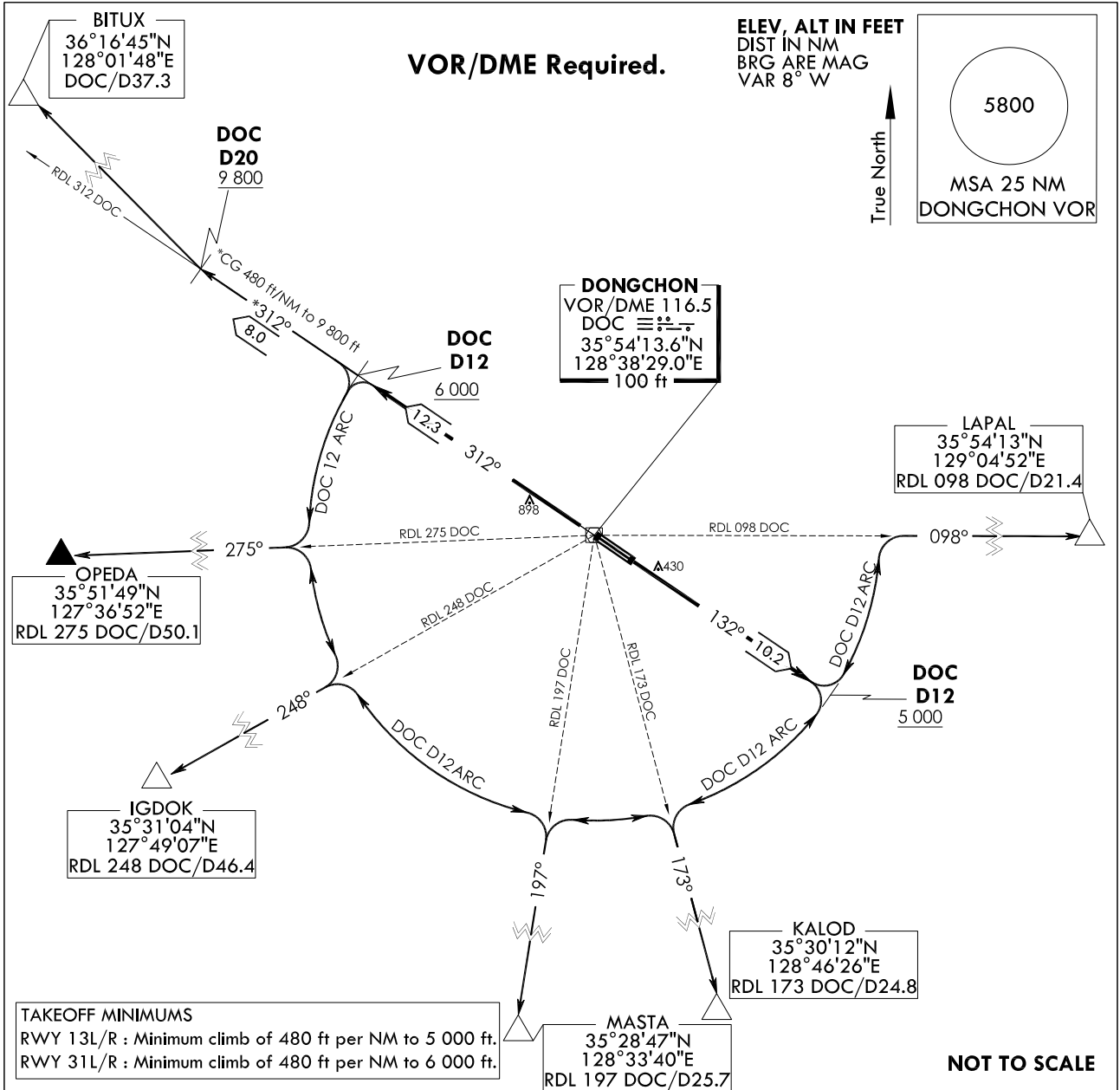
BLANK

STANDARD DEPARTURE
CHART INSTRUMENT(SID)

DAEGU DEP	135.9
	230.3
DAEGU TWR	126.2
	236.6

DAEGU/Daegu Intl(RKTN)
RWY 13R/L, RWY 31R/L
DONGCHON 7

Note : Departure under U.S. TERPS.



TAKEOFF MINIMUMS
RWY 13L/R : Minimum climb of 480 ft per NM to 5 000 ft.
RWY 31L/R : Minimum climb of 480 ft per NM to 6 000 ft.

NOT TO SCALE

DEPARTURE ROUTE DESCRIPTION

DONGCHON 7 DEPARTURE

RUNWAY 13R/L : Climb HDG 132° to intercept RDL 132 DOC and RDL 132 DOC to cross 12DME at or above 5 000 ft, thence.....

RUNWAY 31R/L : Climb HDG 312° to intercept RDL 312 DOC, and RDL 312 DOC to cross 12DME at or above 6 000 ft, thence.....

.....via transition routes and climb assigned altitude by ATC.

The following transitions are ATC assigned only : Fly ARC DOC VOR/DME 12DME to intercept.....

- BITUX Transition** : RDL 312 DOC to cross 20DME at or above 9 800 ft, then direct to BITUX.
- OPEDA Transition** : RDL 275 DOC, then track outbound RDL 275 DOC to OPEDA.
- IGDOK Transition** : RDL 248 DOC, then track outbound RDL 248 DOC to IGDOK.
- MASTA Transition** : RDL 197 DOC, then track outbound RDL 197 DOC to MASTA.
- KALOD Transition** : RDL 173 DOC, then track outbound RDL 173 DOC to KALOD.
- LAPAL Transition** : RDL 098 DOC, then track outbound RDL 098 DOC to LAPAL.

Change : Information of fix name and amended chart form.

INTENTIONALLY

LEFT

BLANK